



Classic Ridge-to-Hip Junction

Roofing Accessories



A range of recommended, purpose-built accessories to complement your TapcoSlate roofing projects. Built from either polypropene/limestone, or from painted-to-colour ABS, these roofing accessories are made to last!

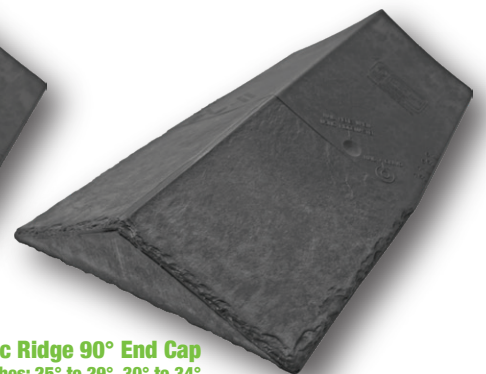
Ridge & Hip Caps



Classic Ridge & Hip Cap
Universal Fitment



Classic Ridge-to-Hip Junction
Three Pitches: 14° to 17°, 18° to 24°
and 24° to 30°

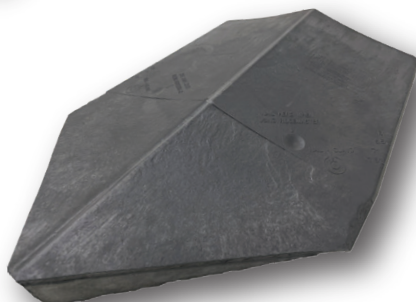


Classic Ridge 90° End Cap
Three Pitches: 25° to 29°, 30° to 34°
and 35° to 40°

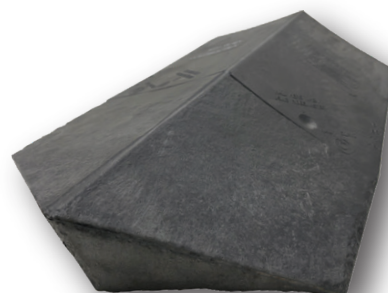
All Ridge & Hip Caps are Available in all Stocked Colours:

- 801 Stone Black
- 804 Pewter Grey
- 809 Red Rock
- 814 Olive Green
- 706 Plum
- 709 Brick Red
- 712 Chestnut Brown

Plus the Classic Ridge & Hip Caps are also available in 790 Coachman Mix

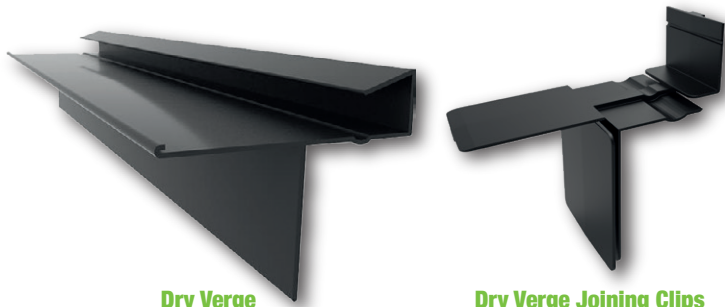


Classic Edwardian Conservatory Hip End Cap



Classic Victorian Conservatory Hip End Cap

Dry Verge



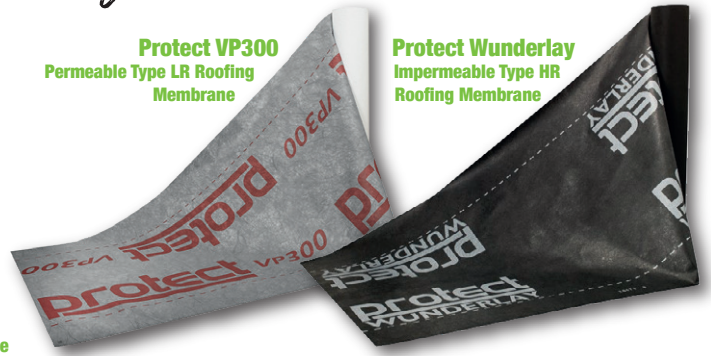
Dry Verge
Dry-fix Slate Dry Verge System
(2m Lengths)

Dry Verge Joining Clips
Forms a Continuous Water Joint for the Dry Verge

Roofing Membrane

Protect VP300
Permeable Type LR Roofing Membrane

Protect Wunderlay
Impermeable Type HR Roofing Membrane



Roof Ventilation



Tapco Abutment Ventilator
Continuous High-level Abutment Ventilation System



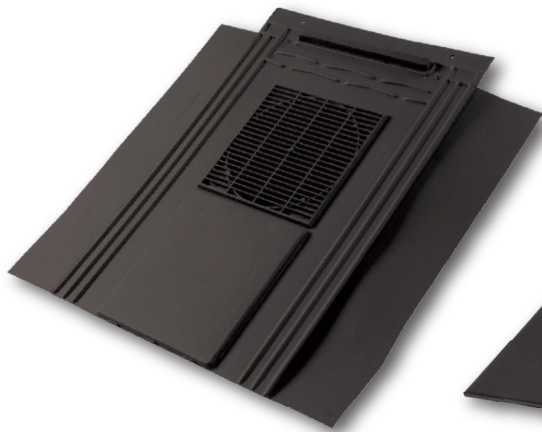
RidgeMaster Plus®
Continuous High-level Ridge Ventilation System



HipMaster®
Continuous Hip Ventilation System



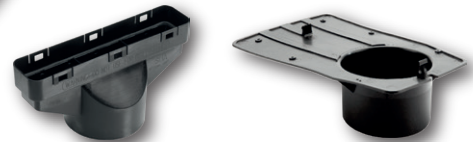
Tapco Eaves Ventilation Kits
Continuous Low-level Eaves Ventilation Available in both 10,000²/mm Air Flow for Cold Roof Applications and 25,000mm²/m Air Flow for Warm Roof Applications



Classic Inline Vent
10,000²/mm Ventilation Provision
Suitable for 20° to 90° Degree Pitch



Classic Cowl Vent
10,000²/mm and 20,000²/mm Ventilation Provision
Suitable for 15° to 90° Degree Pitch



Classic Inline and Cowl Vent Pipe Adapters
Convert the Vent to a Round Soil Pipe Fitting and/or Mechanical Extract Terminal

Screws & Nails



Outdoor Screws & Galvanised Clout Nails
30mm for slate fitment
50mm for ridge/hip cap fitment
75mm to 80mm for RidgeMaster/HipMaster fitment

DOWNLOAD OUR BROCHURE



DOWNLOAD OUR GUIDES

